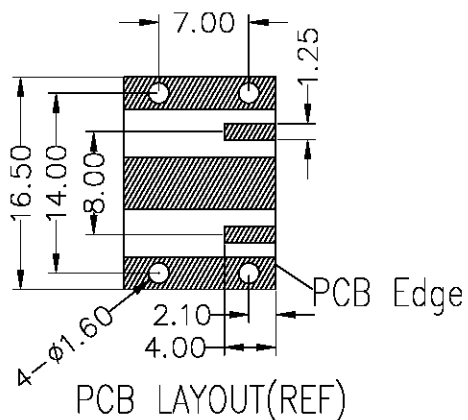
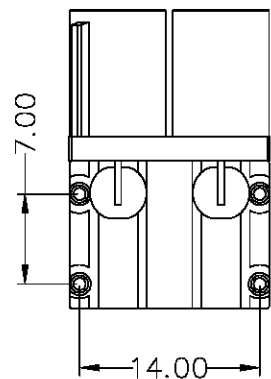
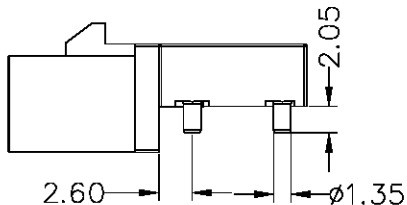
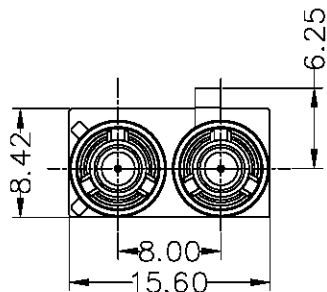


**3D View**



**PCB LAYOUT(REF)**

Version	Description of Change	Date	Drawn by

- Notes:
- Electrical
    - Insulation Resistance:1000M $\Omega$  Min.
    - Dielectric Withstanding Voltage:500V DC
    - Contact Resistance:10m $\Omega$  Max.
  - Mechanical
    - Un-mating force (with lock): 110N Min.
  - Environmental performance
    - Operating Temperature:-40°C to +105°C.
  - Materials:
    - Terminal :Copper alloy
    - Plastic body:High Temperature Thermoplastic  
UL94V-0 Color:Black
    - SHELL :Zinc alloy
    - Housing :High Temperature Thermoplastic,  
UL94V-0, Color: See Part Number
  - Plating:
    - Terminal :Contact area Ni 30u"Min Au 3u"Min.  
Soldering area Ni 30u"Min Sn 80u"Min
    - SHELL : Ni 80u"Min Sn 80u"Min

序号	A	B	C	D	E	F	G
图视							
颜色	黑色(9005)	白色(9001)	蓝色(5005)	紫色(4004)	绿色(6002)	棕色(8011)	灰色(7031)
料号	A-M4007-2-A	A-M4007-2-B	A-M4007-2-C	A-M4007-2-D	A-M4007-2-E	A-M4007-2-F	A-M4007-2-G
序号	H	I	K	L	M	N	Z
图视							
颜色	栗兰色(4003)	米黄色(1001)	咖啡色(1027)	卡红色(3002)	橙色(2003)	蓝绿色(6019)	水蓝色(5021)
料号	A-M4007-2-H	A-M4007-2-I	A-M4007-2-K	A-M4007-2-L	A-M4007-2-M	A-M4007-2-N	A-M4007-2-Z

SCALE (比例)	1:1	Part number (零件料号)	A-M4007-2-*
TYPE (类型)	CW		
TITLE (品名)	卧式沉板 Double Fakra connector		

UNIT:mm	
Tolerance: XXX ±0.15 XX ±0.25 X ±0.35	Angular Dim. XX' ±1° X' ±2° X' ±3°

**HRBCN**

Drawn by (制图)	Linda	Date (日期)	2019/8/25
Confirmed by (审核)	Miki	Version (版本)	0.0
Approved by (核准)	David	SHEET (页数)	1 of 1